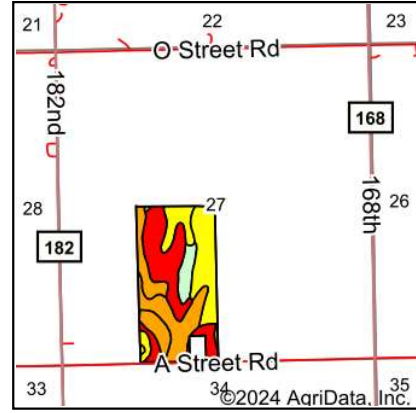
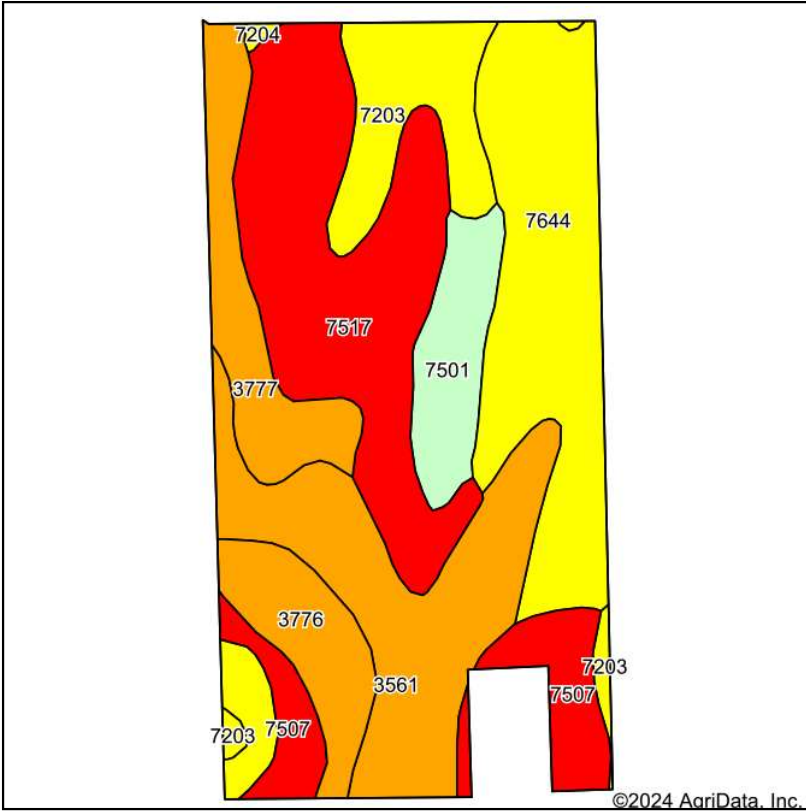


Tract #4 Soils Map



State: **Nebraska**
 County: **Seward**
 Location: **27-10N-4E**
 Township: **Precinct I**
 Acres: **77**
 Date: **7/8/2024**



Area Symbol: NE159, Soil Area Version: 23

Code	Soil Description	Acres	Percent of field	SRPG Legend	Non-Irr Class *c	Irr Class *c	Range Production (lbs/acre/yr)	SRPG	Corn Bu	Corn Irrigated Bu	*n NCCPI Soybeans
7517	Pawnee soils, 6 to 11 percent slopes, severely eroded	17.78	23.1%	■	Vle		3750	45			33
7644	Yutan silty clay loam, 6 to 11 percent slopes, eroded	15.69	20.4%	■	IIle	IVe	3995	66	77	94	58
3561	Hobbs silt loam, occasionally flooded	13.55	17.6%	■	IIw	IIw	4235	71			80
7203	Aksarben silty clay loam, 2 to 6 percent slopes, eroded	6.74	8.8%	■	IIle	IIle	3825	66			54
3777	Muir silt loam, 3 to 7 percent slopes	6.26	8.1%	■	IIle	IIle	3600	75			79
7507	Pawnee clay loam, 6 to 11 percent slopes, eroded	5.67	7.4%	■	IVe		3750	50			39
3776	Muir silt loam, 1 to 3 percent slopes	4.87	6.3%	■	IIe	IIe	3600	75			79
7501	Pawnee clay loam, 4 to 8 percent slopes, eroded	4.71	6.1%	■	IIle		3883				39
7204	Aksarben silty clay loam, 6 to 11 percent slopes, eroded	1.73	2.2%	■	IIle	IVe	3825	62			55
Weighted Average					3.53	*-	3880	58	15.7	19.2	*n 56.2

*n: The aggregation method is "Weighted Average using all components"

*c: Using Capabilities Class Dominant Condition Aggregation Method

*- Irr Class weighted average cannot be calculated on the current soils data due to missing data.

Soils data provided by USDA and NRCS.