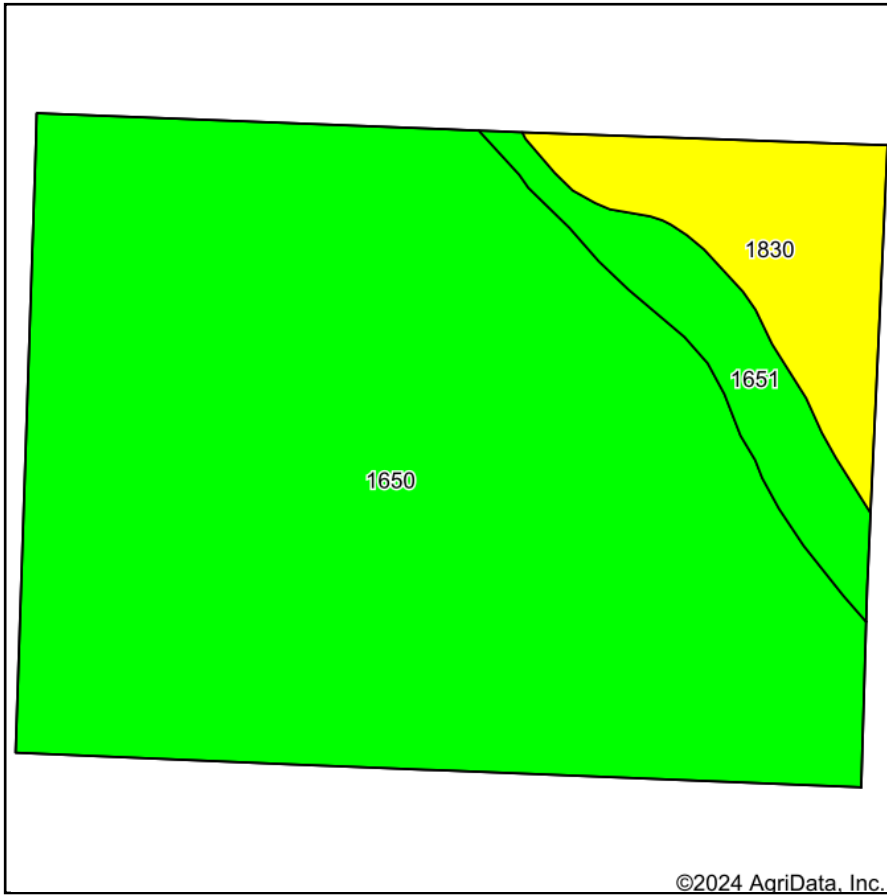
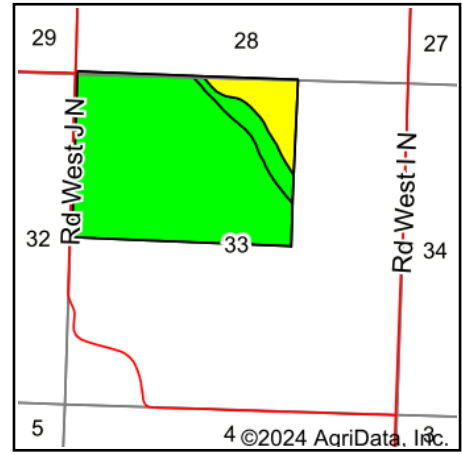


Soils Map



Soils data provided by USDA and NRCS.



State: **Nebraska**
 County: **Keith**
 Location: **33-14N-40W**
 Township: **Brule**
 Acres: **212.28**
 Date: **4/17/2024**



Area Symbol: NE101, Soil Area Version: 23

Code	Soil Description	Acres	Percent of field	Non-Irr Class Legend	Soil Drainage	Non-Irr Class *c	Irr Class *c	Corn Irrigated Bu	Winter wheat Irrigated Bu	*n NCCPI Overall
1650	Kuma loam, 0 to 1 percent slopes	177.23	83.5%		Well drained	Ilc	Iw	144	79	58
1830	Sulco-McConaughy loams, 9 to 30 percent slopes	20.90	9.8%		Well drained	Vle		8		29
1651	Kuma loam, 1 to 3 percent slopes	14.15	6.7%		Well drained	Ile	Ile	140		59
Weighted Average						2.39	*-	130.3	66	*n 55.2

*n: The aggregation method is "Weighted Average using all components"

*c: Using Capabilities Class Dominant Condition Aggregation Method

*-: Irr Class weighted average cannot be calculated on the current soils data due to missing data.

Soils data provided by USDA and NRCS.