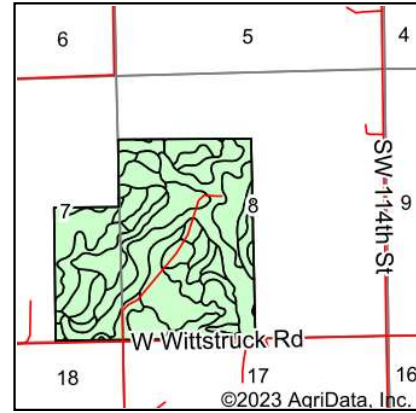
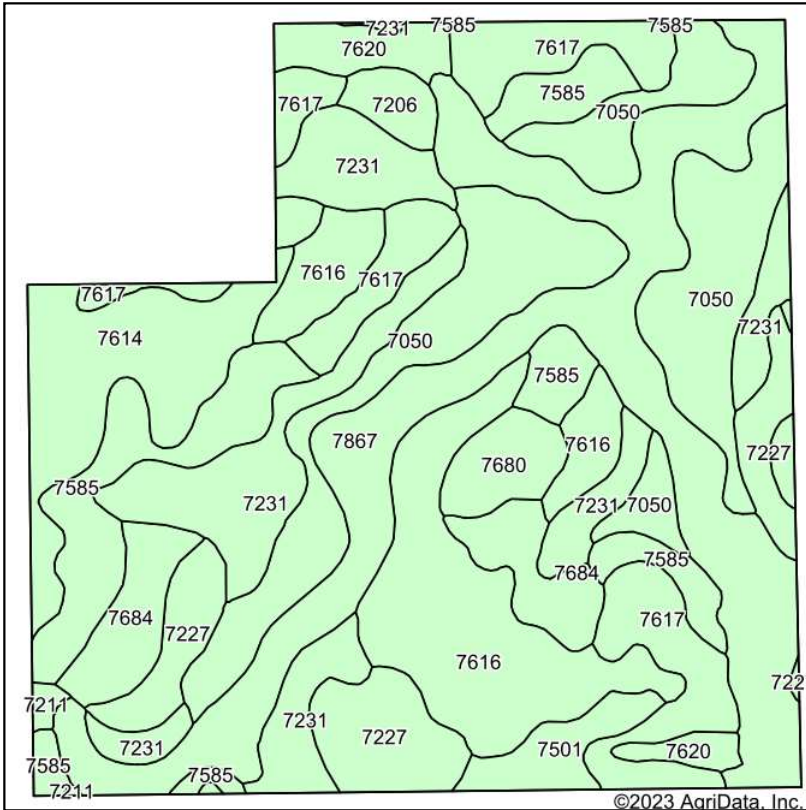


Soils Map



State: **Nebraska**
 County: **Lancaster**
 Location: **8-8N-5E**
 Township: **Highland**
 Acres: **320**
 Date: **8/25/2023**



Soils data provided by USDA and NRCS.

Area Symbol: NE109, Soil Area Version: 27										
Code	Soil Description	Acres	Percent of field	Non-Irr Class *c	Irr Class *c	Range Production (lbs/acre/yr)	SRPG	Corn Bu	Corn Irrigated Bu	*n NCCPI Soybeans
7867	Nodaway silt loam, channeled, frequently flooded	59.91	18.7%	Vlw		2565	59	4	5	42
7050	Kennebec silt loam, occasionally flooded	50.44	15.8%	llw		4360	73	114		82
7231	Judson silt loam, 2 to 6 percent slopes	38.03	11.9%	lle		4224	74			70
7616	Steinauer loam, 6 to 11 percent slopes	36.57	11.4%	Ive		2763	56			68
7617	Steinauer loam, 11 to 30 percent slopes	29.95	9.4%	Vle		2763	33			52
7585	Shelby clay loam, 7 to 12 percent slopes	27.86	8.7%	Ive		4212				60
7614	Steinauer clay loam, 6 to 11 percent slopes, eroded	21.08	6.6%	Ive		2925	55			61
7227	Burchard clay loam, 6 to 11 percent slopes	19.77	6.2%	llle	Ive	3400	68			55
7684	Wymore silty clay loam, 3 to 6 percent slopes, eroded	13.75	4.3%	llle	Ive	3832	70			50
7620	Steinauer clay loam, 20 to 40 percent slopes	7.13	2.2%	Vle		2763	11			18
7680	Wymore silty clay loam, 0 to 1 percent slopes	5.78	1.8%	lls	lls	3750	74			60
7501	Pawnee clay loam, 4 to 8 percent slopes, eroded	5.56	1.7%	llle		3878				39

Soils data provided by USDA and NRCS.

Maps Provided By:



© AgriData, Inc. 2023 www.AgriDataInc.com

Code	Soil Description	Acres	Percent of field	Non-Irr Class *c	Irr Class *c	Range Production (lbs/acre/yr)	SRPG	Corn Bu	Corn Irrigated Bu	*n NCCPI Soybeans
7206	Aksarben silty clay loam, 2 to 6 percent slopes	3.35	1.0%	Ile	IIle	4373	72			59
7211	Burchard-Nodaway complex, 2 to 30 percent slopes	0.82	0.3%	VIe		3200	44			45
Weighted Average				3.88	*-	3428.6	54.1	18.7	0.9	*n 59.4

*n: The aggregation method is "Weighted Average using all components"

*c: Using Capabilities Class Dominant Condition Aggregation Method

*- Irr Class weighted average cannot be calculated on the current soils data due to missing data.