

LAND FOR SALE
MADISON COUNTY, NEBRASKA
34.92 +/- ACRES
\$350,000

Excellent acreage opportunity within the City of Norfolk jurisdiction.

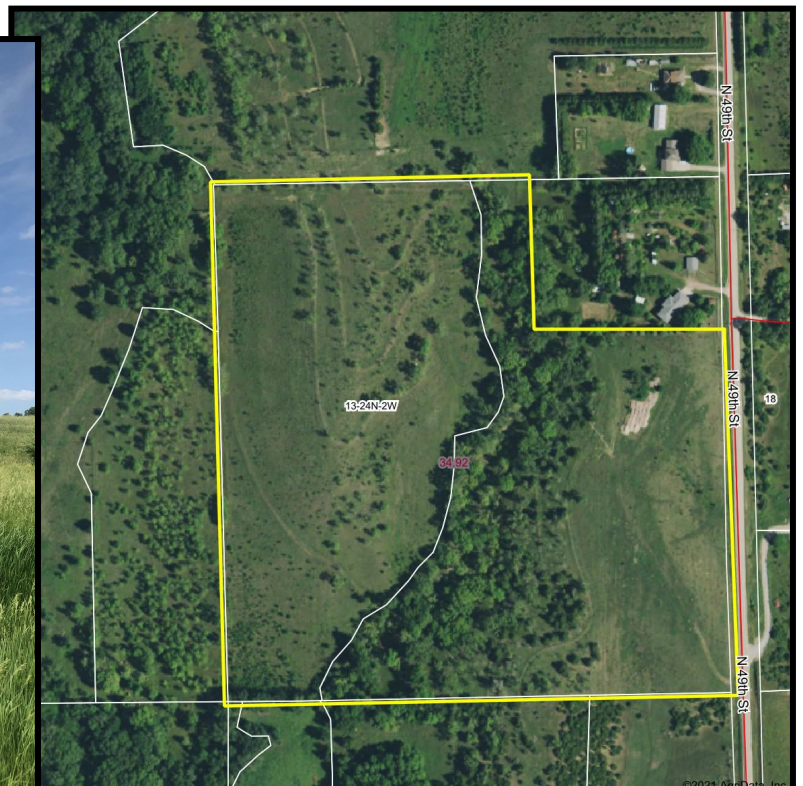
LOCATION: From the intersection of West Benjamin Avenue and North 49th Street go 1/2 mile north on N 49th Street and property is on the west side of road.

LEGAL: Part of the Southeast Quarter of the Northeast Quarter (SE4NE4) Section 13, Township 24 North, Range 2 West in Madison County, Nebraska.

ZONING: This parcel is located in the City of Norfolk jurisdiction. It is being offered for sale as one unit, but if the potential buyer is interested in a smaller portion of the property, feel free to contact Listing Agent.

2020 REAL ESTATE TAXES: \$1,131.30

POSSESSION: Landlord's possession at closing. The grazing lease ends November 30, 2021. Earlier possession is a possibility.



Andrew Stech

Associate Broker • Land Manager
402-371-0065 (office) • 402-649-8744
Andrew.Stech@ufarm.com
400 W Braasch Ave, Suite 1

Please visit our website for more information
www.ufarmrealestate.com