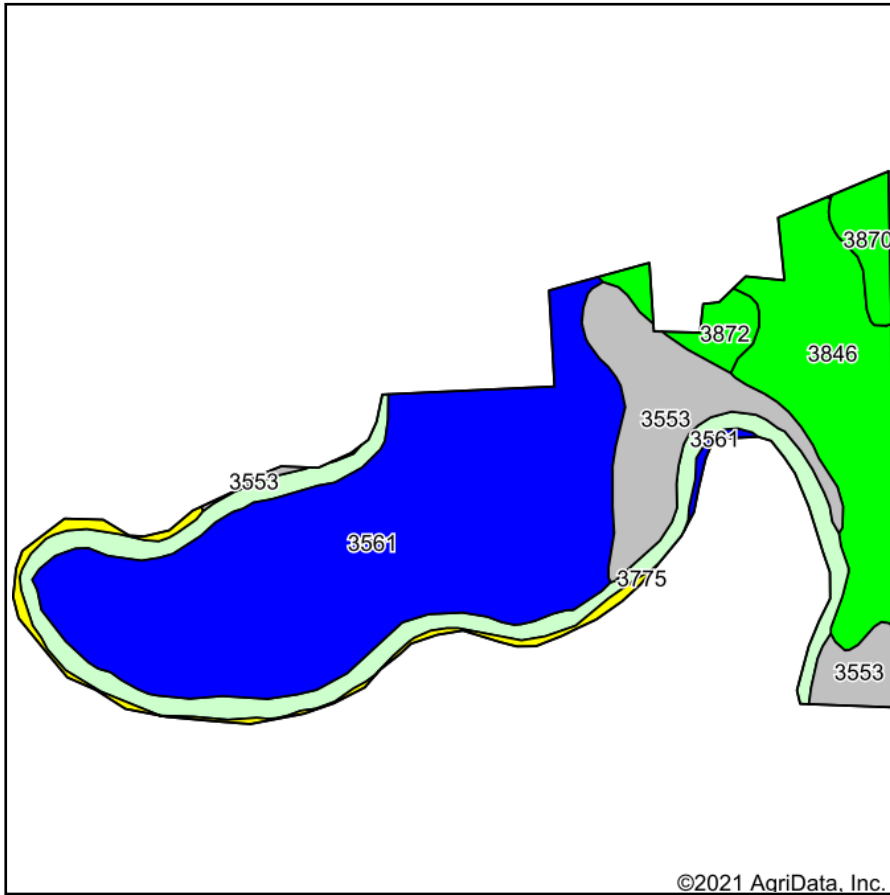
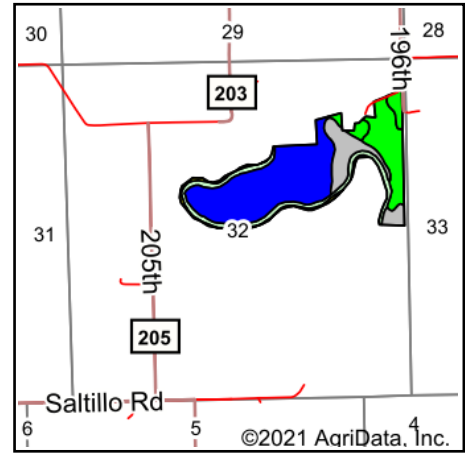


Soils Map



Soils data provided by USDA and NRCS.



State: **Nebraska**
 County: **Seward**
 Location: **32-9N-4E**
 Township: **Precinct P**
 Acres: **79.9**
 Date: **2/4/2021**



Maps Provided By:



© AgriData, Inc. 2021

www.AgriDataInc.com



Code	Soil Description	Acres	Percent of field	Non-Irr Class Legend	Non-Irr Class *c	Irr Class *c	Range Production (lbs/acre/yr)	SRPG	*n NCCPI Overall	*n NCCPI Corn	*n NCCPI Small Grains	*n NCCPI Cotton
3561	Hobbs silt loam, occasionally flooded	40.05	50.1%		IIw	IIw	4235	71	81	65	46	0
3846	Geary silty clay loam, 3 to 7 percent slopes, eroded	13.08	16.4%		IIIe	IIIe	3400	73	63	59	47	0
3553	Hobbs silt loam, frequently flooded	10.68	13.4%		VIw		4235	56	56	50	37	0
9999	Water	10.34	12.9%				0	0				
3870	Hastings silty clay loam, 3 to 7 percent slopes, eroded	2.05	2.6%		IIIe	IIIe	3226	71	59	58	45	0
3872	Hastings silty clay loam, 3 to 7 percent slopes, severely eroded	1.96	2.5%		IIIe	IIIe	3226	71	55	54	41	0
3775	Muir silt loam, rarely flooded	1.74	2.2%		Iw	Iw	3600	75	85	85	65	8
Weighted Average							3485.8	60.2	*n 63.1	*n 53.6	*n 39.3	*n 0.2

*n: The aggregation method is "Weighted Average using all components"

*c: Using Capabilities Class Dominant Condition Aggregation Method

Soils data provided by USDA and NRCS.