

LAND FOR SALE

STANTON COUNTY, NEBRASKA

151 +/- ACRES

PROPERTY IS PRICED AT \$7400 PER SURVEYED ACRE.
APPROXIMATELY 9 ACRES WILL BE SURVEYED OFF OF PROPERTY FOR ACREAGE.



PROPERTY DESCRIPTION: Well maintained farm with great location and nearly level. Good tenant currently in place and located 1-1/2 miles from major highway and close to ethanol plant.

LOCATION: Property is located 1-1/2 miles East of Highway 35 and County Road 844.

LEGAL: West Half of the Northeast Quarter (W2NW4) and the East Half of the Northwest Quarter (E2NW4) Section 16, Township 24 North, Range 1 East of the 6th PM in Stanton County, Nebraska.

SOILS: Nora Crofton Complex - Class IIe

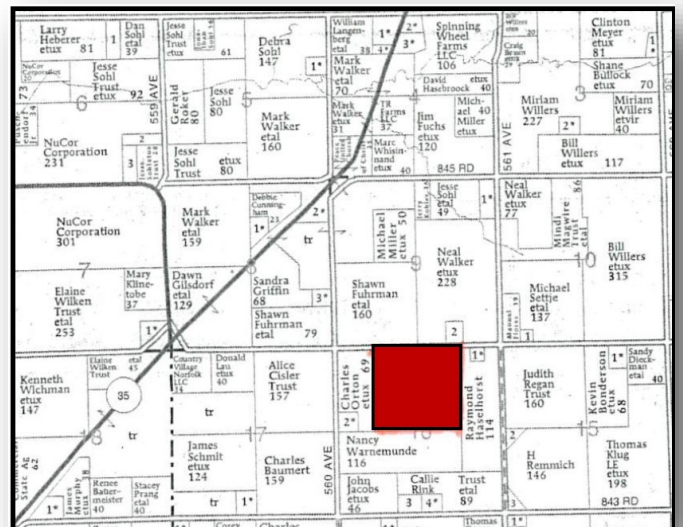
ASSESSED ACRES: 160 Acres

ZONING: Transitional Ag - Tax District 120

POSSESSION: Closing Date Negotiable

SCHOOL DISTRICT: Norfolk 2 General 59-0002

2017 REAL ESTATE TAXES: \$11,482



Randy Oertwich, Sales Associate
402-371-0065 or 402-649-0777
Randy.Oertwich@ufarm.com

Please visit our website for more information: www.ufarmrealestate.com

The information contained herein is deemed reliable. We have no reason to doubt its accuracy, but we do not guarantee it. The prospective buyer should verify all information contained herein.